



THE BENEFITS OF
BlueLine®



SMART SOLUTIONS FOR RESIDENTIAL PIPE REPAIRS

BLUELINE OFFERS A STRUCTURAL REPAIR AND REHABILITATION SOLUTION.

Avoid expensive repair bills for your home – solve leaking and damaged pipes quickly and efficiently with Nuflow’s innovative pipe repair and relining solutions. Even just one leaking pipe can result in water pooling under your floors and fixtures, potentially causing lasting damage.

At Nuflow, we believe in cutting-edge innovation when it comes to maintaining and repairing pipes. That’s why we’ve spent 10 years carrying out research and development to fine-tune our systems. This gives us

the ability to repair and reline pipes without the hassle of pipe excavation or causing damage to infrastructure by digging.

We aim to help residents repair or strengthen their pipes affordably and easily, with minimal damage to their property. If you’re after a way to repair pipes without destroying surfaces, choose our innovative BlueLine system. Alternatively, if you need a way to restore corroded pipes against leaks and corrosion for years to come, our efficient Redline system can help.

OUR BLUELINE PRODUCT

Many pipe repair systems require digging and destroying infrastructure to reach your leaking pipes – not so with Nuflow's Blueline system.

Blueline can solve issues with leaking or blocked stormwater and water pipes without excavating, meaning minimal damage and disruption to your home and no being stuck with expensive infrastructure repair bills. Have you noticed:

- Toilets and sinks are filling up fast and receding slowly?
- Drainage overflow outside the house?
- Wet spots appearing on walls?
- Pooling on floors?

These signs all indicate you could have a blocked drain or leaking pipe. We can inspect and jet clean your pipes to remove blockages and then use a pipe camera to find the source of the problem. Once clear, the pipes are then lined with a tailor-made liner that can stop leaks and repair blocked, damaged or leaking pipe/s. It's the most versatile and durable pipe lining system in the world as well. It is easy to install and comes with a 50-year manufacturer's warranty of 50 years.

OUR RESIDENTIAL SERVICES

Designed to repair pipes under surfaces you don't want to destroy, Blueline solves problems with leaking sewerage pipes, leaking stormwater pipes and leaking water pipes without having to excavate any surfaces – resulting in minimal disruption.

What pipes can we repair?

- PVC, earthenware or clay, asbestos, galvanised steel, cast iron, copper, concrete and HDPE
- Diameters from 40mm to 1000mm
- Vertical or horizontal, square, rectangular or round pipes

How do I know for sure what is causing the blockage?

The only way to be completely sure of what is causing a blockage is to have an inspection completed. Our inspection process involves surveying, cleaning your pipes and removing any blockages. This enables a clear view to provide a diagnosis of problems and a detailed end-of project report.

How do you know if you have a blocked drain or pipe?

- After flushing, toilets fill up then recede slowly
- Drainage may overflow outside
- Bad odours
- Water fills up and recedes slowly in sinks

What causes my drains to become blocked?

- Deteriorated physical condition
- The flushing of foreign items
- Tree roots entering a broken pipe
- Ground movement

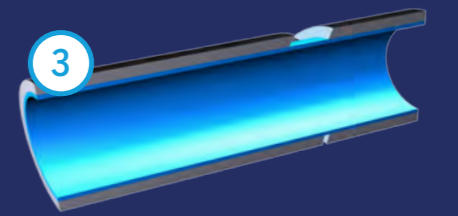
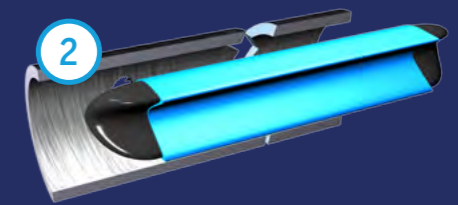
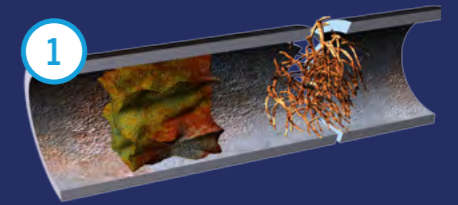


HOW DOES THE BLUELINE SYSTEM WORK?

Before any relining takes place, the drains must first be inspected and surveyed. We use a pipe camera to identify and locate the cause of the problem. The drain is then cleared using high pressure water jets. Once the blockage is cleared the pipe is then ready for the liner installation.

Our liner is custom made from fabric that is impregnated with specially formulated two part epoxy resin that sets hard. It becomes a structural repair in a matter of hours, resulting in minimal disruption and inconvenience.

Once the liner is tailor made and prepared, it is inserted into the drain via any opening. It is positioned in place with a camera and inflated, forcing the liner to take the shape of the pipe. This fills any voids or cracks and lining over any damaged section. After a curing period, the internal bladder of the liner is removed, completing the process and making the drain ready for use immediately.



CASE STUDY – OVERLEA STREET

The sewer line of this brand new house was completely broken, allowing gravel to enter the pipe and undermining the integrity of the slab.

Work Performed

Utilising our Blueline technology, Nuflow repaired 1m of a 100mm PVC sewer line that was filled with gravel due to a serious break.

The problem

A section of the sewer pipe, running under the concrete floor, in a brand new house, was damaged leaving over half a metre of void space with no pipe. This caused gravel to fill the line and undermine the house slab.

Results

Within a day, Nuflow was able to repair the sewer pipe without any excavation or disruption to the occupants of the house.



Alternatives

An alternative to the relining of this project would have been to excavate the area and replace the pipe.

This would have involved removing the flooring surfaces and digging up the concrete house slab to access the pipe which was nearly a metre deep. These works would have caused major disruption to the occupants of this brand new house and may have resulted in significant reinstatement costs.

CASE STUDY – THE POINT

Seniors Community Living “The Point”, consists of luxury style units built across 5 separate buildings. During periods of heavy rain the basement car park would flood.

Work Performed

Utilising our Blueline technology, Nuflow relined a section of a 100mm PVC stormwater line.

The problem

After completing a CCTV investigation Nuflow identified the problem as being a break in the stormwater line and displaced join. In addition, there was a significant amount of sediment deposited in the lines as a result of the break.

Results

Nuflow was able to structurally repair the sewer line without any disruption or displacement to the residents of the building. In addition, by accessing the damaged area utilising existing access points and installing our cure-in-place technology, Nuflow prevented any surfaces being destroyed.

Alternatives

The only other option would have been to remove the damaged pipes and replace them. This would have resulted in significant damage to surfaces and disruption to residents. In addition expensive restoration and replacement costs would be incurred to replace the damaged surfaces.





SMART SOLUTIONS FOR COMMERCIAL PIPE REPAIRS

BLUELINE OFFERS A STRUCTURAL REPAIR AND REHABILITATION SOLUTION.

If you need versatile and effective solutions for your commercial drainage, Nuflow has the systems you need. We believe that every business should have someone to turn to when drainage issues occur. At Nuflow, we've spent more than 10 years perfecting our technology to make it as efficient as possible for repairing leaking sewerage, stormwater and water pipes – without excavating surfaces. That means minimal interruption to your day-to-day business.

Our innovative liners have been developed to handle temperatures up to 140 degrees Celsius, as well as handling avgas, potable water and sulphuric acid, all up to the Australian Water Quality Centre standards. This makes our products and services versatile for different business types and needs.

OUR BLUELINE TECHNOLOGY

Forget the necessary evil of closing your entire business down for a day during pipe repairs. With our Blueline technology, we can fix your pipe problems quickly, easily and without making a mess.

Blueline is a joint-free pipe repair that can act as a barrier between water and pipe walls, solving leaks efficiently without damage or digging to the landscape or buildings.

No matter what you're after, whether it's repairs, fixing leaks or strengthening piping to help it last longer, Nuflow can help. Let us prove to you why we're Australia's leading pipe repair and unblocking specialists.

Blueline is perfect if your business needs a product that can:

- Stop leaks, blockages, water damage and calcium build up while also preventing root intrusion
- Increase water flow
- Be used with metal, iron, steel, clay, concrete, PVC and fiberglass piping
- Be used as an alternative to drain replacement
- Repair pipes within buildings and in underground and under-building foundations
- Minimise digging and destruction to your business' building or landscape
- Be built to last with a 10-year installation guarantee and a manufacturer's warranty of 50 years.



PASSIONATE ABOUT PIPE MAINTENANCE

We have a reputation for providing top services to businesses – and we've serviced pipes in commercial multi-story structures, industrial and government facilities, as well as medical facilities, maritime vessels and underground utilities.

With close to 50 Franchise Partners across Australia, New Zealand and South East Asia, including at least one in every Australian state, you can feel confident that there is a Nuflow Franchise Partner close enough to do the job for you.

No matter the task, big or small, easy or hard, Nuflow could have the solution. Just give us a call on 1800 683 569 to see how we can help. Otherwise, you can visit us at www.nuflowtech.com.au

OUR COMMERCIAL SERVICES

Blueline offers a structural repair and rehabilitation solution for a variety of drainage systems including sewerage pipes, stormwater pipes and vertical drain stacks. Blueline can be utilised for all types of pipe including clay, concrete, metal, iron, steel, PVC and fiberglass repairs.

Blueline restores and maintains water flow and acts as a barrier between water and pipe walls that stops leaks, bridges gaps and spans holes in the pipe. Blueline is a seamless, joint-free pipe repair process that is used to rehabilitate blocked drains and deteriorating sewer and stormwater pipes.

Blueline is the ideal long-term solution for pipe leaks and breaks, drain blockages, root intrusion, calcium build-up, water damage and sewer backups.

As a non-invasive pipe rehabilitation process, Blueline cost-effectively restores deteriorated and failing underground or in-building pipe systems. Our Blueline pull-in-place technology is uniquely capable of restoring pipes in diameters from 40mm to

1000mm within buildings as well as underground and under building foundations. All without digging or destruction to buildings or landscape.

Blueline allows the restoration of pipe systems with multiple bends, elbows, branches and transitions in pipe diameter all from existing access points.

Nuflow are the specialists in Lateral Connection Liners (LCL) for any type of junction. Blueline repairs the whole junction in one process. We can reline any type of pipe, diameter or length combination. Junctions can be anywhere from 45 or 90 degrees.

What are the benefits?

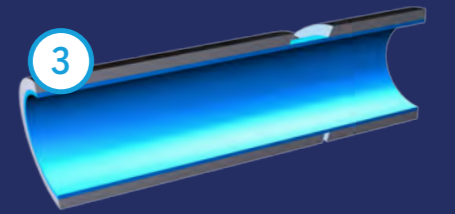
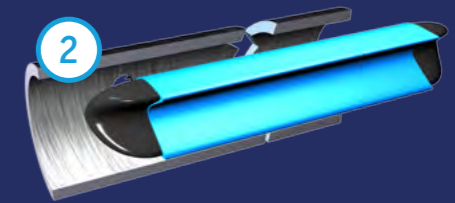
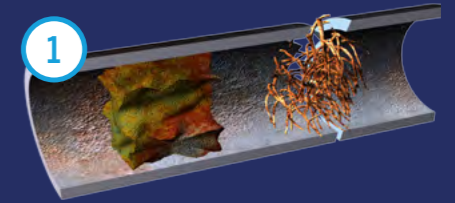
- Prevents root intrusion and stops leaks
- Assists to prevent blocked drains
- Increases water flow
- No digging or destruction
- Offers the structural strength of new pipes
- Alternative to drain replacement

HOW DOES THE BLUELINE SYSTEM WORK?

Before any relining takes place, the drains must first be inspected and surveyed. We use a pipe camera to identify and locate the cause of the problem. The drain is then cleared using high pressure water jets. Once the blockage is cleared the pipe is then ready for the liner installation.

Our liner is custom made from fabric that is impregnated with specially formulated two part epoxy resin that sets hard. It becomes a structural repair in a matter of hours, resulting in minimal disruption and inconvenience.

Once the liner is tailor made and prepared, it is inserted into the drain via any opening. It is positioned in place with a camera and inflated, forcing the liner to take the shape of the pipe. This fills any voids or cracks and lining over any damaged section. After a curing period, the internal bladder of the liner is removed, completing the process and making the drain ready for use immediately.



CASE STUDY – CATERPILLAR LOGISTICS

Caterpillar's state-of-the-art distribution facility supports the worldwide expansion of this heavy industry equipment manufacturer. Multiple leaks in the new fire system was putting the entire building at risk.

Work Performed

Utilising our Blueline technology, Nuflow relined multiple lengths of blue brute fire lines ranging in diameters from 262mm to 315mm. A double thickness liner was utilised as, being a fire line, the reline work was required to withstand pressure of up to 1700 kpa's.

The problem

After an investigation of the fire line, it was discovered there were multiple leaks including one near a 45 degree bend and junction. This resulted in the line not being able to hold pressure, meaning, should there be a fire, the system would not function to full capacity.



Results

Nuflow were able to rehabilitate all lines with no disruption to surfaces or essential services.

Alternatives

An alternative to relining would have been to excavate the area and replace the pipes. This would have been very expensive, disruptive and labour intensive due to the pipes being located 4m under hardstand pavement, a surface designed specifically to support the heavy traffic flow of oversize vehicles.

CASE STUDY – BULIMBA SIPHON

The Bulimba to Hamilton Siphon carries sewage beneath the Brisbane River. Nuflow worked with Meyjor Industries to refurbish the access to the shafts.

Work Performed

Utilising our Blueline technology, Nuflow relined two 4m sections of a 710mm steel sewerage pipe. Due to the nature of the project a double felt liner was utilised.



The problem

After an investigation of the sewer line, it was discovered there were multiple leaks within the 710mm pipes due to corrosion that was resulting in infiltration. Tough engineering challenges were inherent in this project from the start. These include the requirements of confined space entry, the likelihood of sulphuric gas being present in the horizontal tunnel and requiring ventilation and workers requiring breathing apparatus in case of emergency.

Results

Nuflow was able to rehabilitate the line with no disruption to customers, tenants, surfaces or essential services.

Alternatives

An alternative to relining would have been to demolish two houses near the existing siphon and rebuilding a new station. This would have been very expensive, disruptive and labour intensive due to the location of the pipes. In addition, these works would have caused major inconvenience to residents in the area and resulted in two home owners losing their houses.



1800 NUFLOW (683 569)

NUFLOWTECH.COM.AU